

Bring Your Commercial or Industrial Project to Life

Let one of our **Commercial
Account Managers** provide
you with turnkey solutions
for your renovation or
construction project.



1-888-670-9742
renoassistance.ca/en/commercial

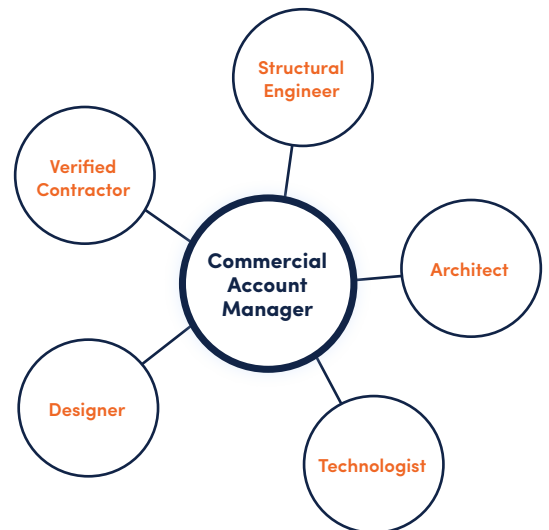
 **RenoAssistance**
by  Desjardins

One of our **experienced Account Managers** will be there to support you throughout your project. They'll help you manage tenders, compare and negotiate bids, oversee the work schedule, and ensure that the project is completed on time and on budget. It's like having another team member dedicated to the success of your commercial or industrial renovation project.

The Strength of a Network

When you own or run a business, time is precious. Both renovation and construction projects require permits, several professionals, and a general contractor who can complete the project on time and on budget.

RenoAssistance by Desjardins connects you with not only Verified Contractors but also other professionals like architects, interior designers, and structural engineers. Our experienced team has what it takes to successfully complete even the most complex projects.



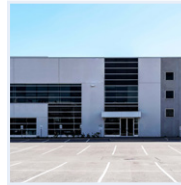
Why Trust Us?

Let RenoAssistance by Desjardins recommend you the best professionals for your project.

- Access to a complete network of professionals
- Experienced Account Managers
- 53-point Verified Contractors
- An average contractor score of 95.3%



We specialize in a variety of renovation and construction projects



Industrial



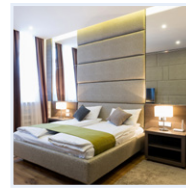
Restaurant



Office



Clinic



Hotel



Daycare



Retail



Multi-unit housing



And much more



What to Expect

1

Describe Your Project

Speak to an experienced Commercial Account Manager about your project.

2

Turnkey Solutions

Your Account Manager will recommend up to 3 Verified Contractors for your project.

3

Start Your Project

Start your project knowing we'll be there to support you every step of the way!

 **RenoAssistance**
by  Desjardins

1-888-670-9742
renoassistance.ca/en/commercial